



STUDIO WILLIAM

Studio William is an English Cutlery Company. The Company was founded by CEO William Welch, an industry shaping, multi-award winning, Industrial Designer. William's pioneering products, are designed around human touch, elegance in appearance and inspiration taken from nature. We are committed to nature, tree planting charities and environmental corporate responsibilities.



THE CHICAGO
ATHENAEUM
MUSEUM OF
ARCHITECTURE
AND DESIGN



THE CHICAGO
ATHENAEUM
MUSEUM OF
ARCHITECTURE
AND DESIGN



THE CHICAGO
ATHENAEUM
MUSEUM OF
ARCHITECTURE
AND DESIGN



THE CHICAGO
ATHENAEUM
MUSEUM OF
ARCHITECTURE
AND DESIGN



THE CHICAGO
ATHENAEUM
MUSEUM OF
ARCHITECTURE
AND DESIGN



THE CHICAGO
ATHENAEUM
MUSEUM OF
ARCHITECTURE
AND DESIGN



THE CHICAGO
ATHENAEUM
MUSEUM OF
ARCHITECTURE
AND DESIGN



AWARDS

Since the launch of Studio William Welch Ltd in 2005, we have received over 30 international Design Awards. Studio William cutlery is in permanent museum collections around the world including the Victoria And Albert Museum London, the London Design Museum, The MAK Design Museum in Vienna, Reddot Design Museum Essen Germany, Chicago Athenaeum Museum of Architecture and Design Chicago.

MUSEUMS



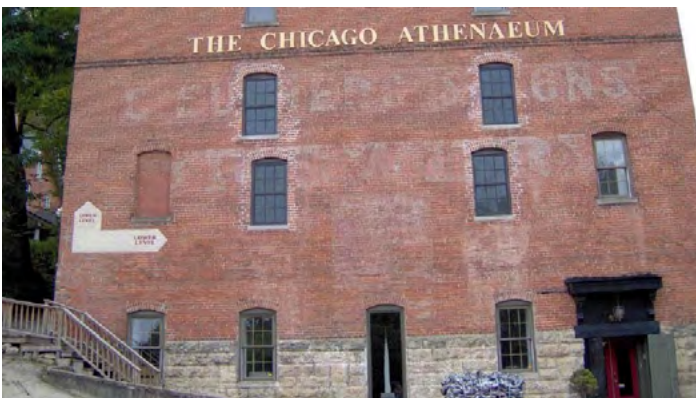
RED-DOT DESIGN MUSEUM GERMANY

Studio William's Award winning ranges Mulberry, Olive, Balsa, Karri and Mahogany, are stored as outstanding examples of contemporary British Cutlery Design.



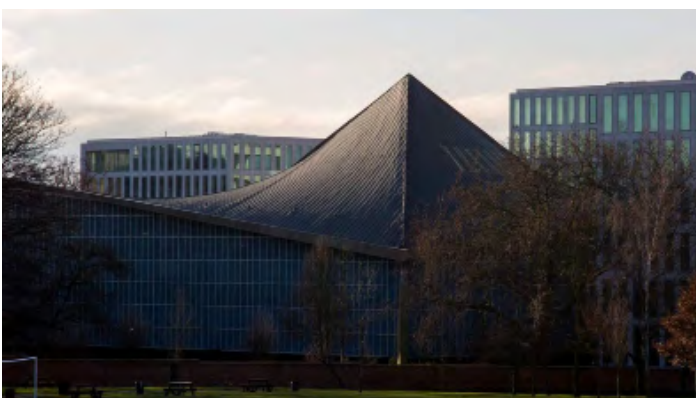
VICTORIA AND ALBERT MUSEUM LONDON

The V & A, holds Studio William cutlery, as an example of contemporary British Cutlery Design, in their permanent collection.



THE CHICAGO ATHENAEUM MUSEUM OF DESIGN AND ARCHITECTURE

The Chicago Athenaeum, has awarded Studio William patterns, over five awards for Good Design. As part of the awards process, they keep samples of every product that has won a Good Design Award, in their permanent collection.



THE NEW LONDON DESIGN MUSEUM

Studio William's Sensory Textured Spoons, are displayed as part of an exhibition, at the London Design Museum's new location in Kensington (the old Commonwealth building).



OKINA SATIN - 6MM

Okina is the physical embodiment of Yin & Yang, light and dark. Two contrasting knife designs, form part of one contrasting collaboration; the Orient inspired curvaceous knives and the European minimal straight knives. Okina allows users to change the aesthetic of the table setting through the switching of different knives, whilst using the same forks and spoons. The playfulness and adaptability we love, use the straight knife for lunch service, and the curved knives for evening service.



THE CHICAGO
ATHENAEUM
MUSEUM OF
ARCHITECTURE
AND DESIGN



product
design award



SHOWING USE OF STRAIGHT KNIFE





SHOWING USE OF CURVED KNIFE



SIDE FORK 188MM - OKS880004



TABLE FORK 210MM - OKS880002



CURVED TABLE KNIFE 240MM - OKS880087



CURVED SIDE KNIFE 212MM - OKS880088



SOUP SPOON 210MM - OKS880003



DESSERT SPOON 188MM - OKS880006



ENGLISH TEA SPOON 132MM - OKS880007

COMBINED KNIVES



SIDE FORK 188MM - OKS880004



TABLE FORK 210MM - OKS880002



STRAIGHT TABLE KNIFE 240MM - OKS880001



CURVED TABLE KNIFE 240MM - OKS880087



STRAIGHT SIDE KNIFE 212MM - OKS880005



CURVED SIDE KNIFE 212MM - OKS880088



SOUP SPOON 210MM - OKS880003



DESSERT SPOON 188MM - OKS880006



ENGLISH TEA SPOON 132MM - OKS880007



JAPANESE SPS MELAMINE CHOPSTICK BLACK 270MM - JPN

EXTRA PIECES

-  SMALL BOWL DESSERT SPOON 188MM - OKS880018
-  SEAFOOD FORK 150MM - OKS8800045
-  PASTRY FORK 160MM - OKS8800055
-  SERVING SPOON 247MM - OKS8800009
-  SERVING FORK 247MM - OKS8800011
-  COFFEE SPOON 115MM - OKS8800013
-  ESPRESSO SPOON 105MM - OKS8800014
-  STEAK KNIFE 245MM - OKS8800015
-  APPETIZER / BUTTER KNIFE 172MM - OKS8800019





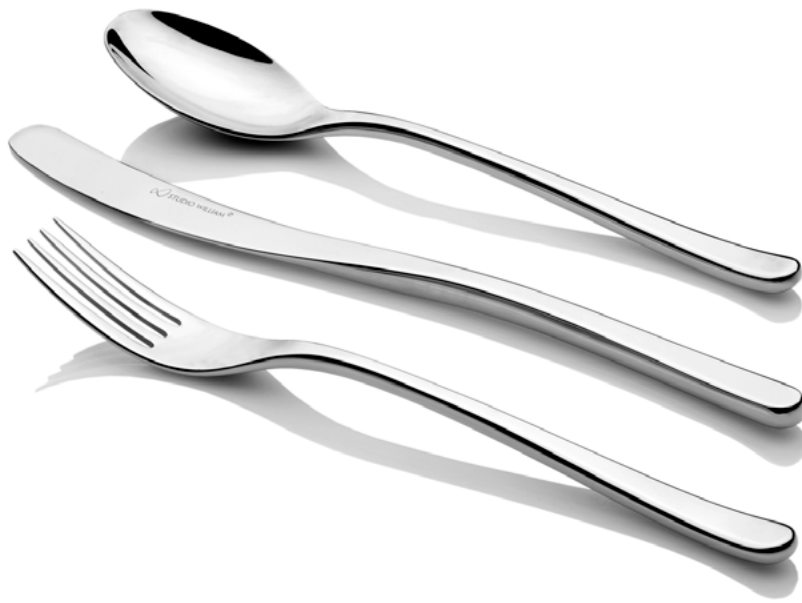
WATCH OKINA VIDEO





AROLLA MIRROR - 6MM

The Arolla tree is a form of pine tree widely found across central Europe, most commonly in the Alps and Carpathian mountains. Arolla has weight and substance, but is perfectly balanced. It's organic and asymmetric lines have been designed to be ergonomically and aesthetically appealing. The form of the knife blade compliments the clear lines of the spoon and forks.



SIDE FORK 188MM - ALM880004



TABLE FORK 210MM - ALM880002



TABLE KNIFE 240MM - ALM880001



SIDE KNIFE 212MM - ALM880005



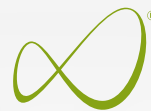
SOUP SPOON 210MM - ALM880003



DESSERT SPOON 188MM - ALM880006



ENGLISH TEA SPOON 132MM - ALM880007



SERVING SPOON 248MM - ALM880009



SERVING FORK 248MM -ALM880011



COFFEE SPOON 116MM - ALM880013



ESPRESSO SPOON 106MM - ALM880014



STEAK KNIFE 245MM - ALM880015



SMALL BOWL DESSERT SPOON 188MM - ALM880018



BOUILLON SPOON 188MM - ALM880034



FISH FORK 188MM - ALM880023



FISH KNIFE 225MM - ALM880022



BUTTER KNIFE 172MM - ALM880019



PASTRY FORK 160MM - ALM880055

WATCH AROLLA VIDEO



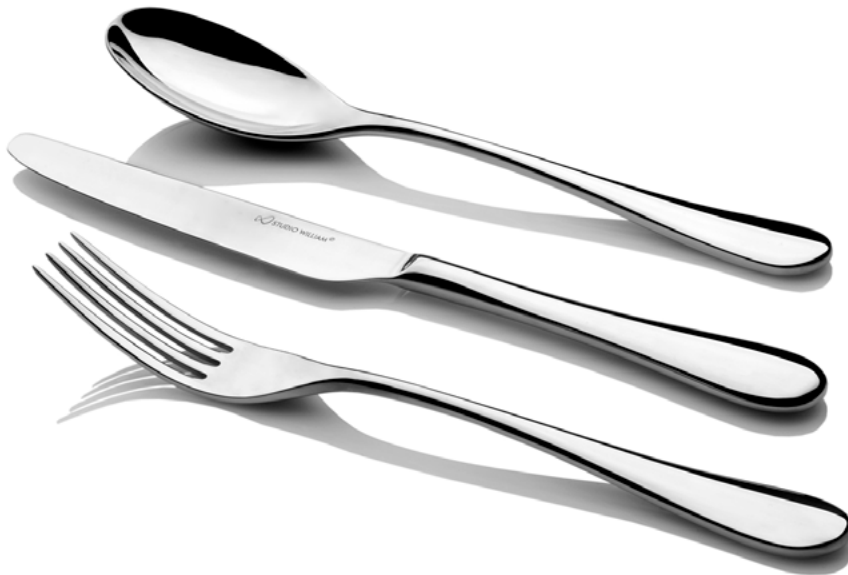


MULBERRY MIRROR - 5MM

The Mulberry tree is generally a short-lived tree with a lifespan similar to that of humans, however there are some known to be over 250 years old. Mulberry can be found at No.10 Downing Street and has received international design recognition via a coveted Reddot Design Award. A sophisticated and timeless design, perfect for both contemporary and traditional table settings.



reddot design award



SIDE FORK 188MM - MUM8800004



TABLE FORK 210MM - MUM8800002



TABLE KNIFE 240MM - MUM8800001



SIDE KNIFE 212MM - MUM8800005



SOUP SPOON 210MM - MUM8800003



DESSERT SPOON 188MM - MUM8800006



ENGLISH TEA SPOON 132MM - MUM8800007



SERVING SPOON 248MM - MUM880009



SERVING FORK 248MM - MUM880011



COFFEE SPOON 116MM - MUM880013



ESPRESSO SPOON 106MM - MUM880014



STEAK KNIFE 245MM - MUM880015



PIE SERVER 248MM - MUM880016



SAUCE LADLE 174MM - MUM880017



FRENCH SAUCE SPOON 188MM - MUM880029



CHOP STICKS - 240MM MUM880031



SMALL BOUILLON SPOON 188MM - MUM880034



LONG MOCHA SPOON 220MM - MUM880036



BUFFET SPORK 185MM - MUM880048



LOBSTER PICK 200MM - MUM880050



PASTRY FORK 160MM - MUM880055



ICE CREAM SPOON 160MM - MUM880064





SEAFOOD/TASTER FORK 150MM - MUM880045



MINI TASTER SPOON 150MM - MUM880038



TASTER TWEEZERS 188MM - MUM880049



TASTER SPORK 135MM - MUM880046



MINI SAUCE LADLE 126MM - MUM880037



LARGE SOUP LADLE 320MM - MUM880030



CAKE KNIFE 325MM - MUM880033



RICE SERVING SPOON 248MM - MUM880089



SMALL BOWL DESSERT SPOON 188MM - MUM880018



BUTTER KNIFE 172MM - MUM880019



CHEESE KNIFE 216MM - MUM880020



FISH FORK 188MM - MUM880023



FISH KNIFE 225MM - MUM880022



APPETIZER/ TAPAS SPOON 150MM - MUM880027



APPETIZER/ TAPAS FORK 150MM - MUM880026



MINI BOUILLON SPOON 158MM - MUM880065



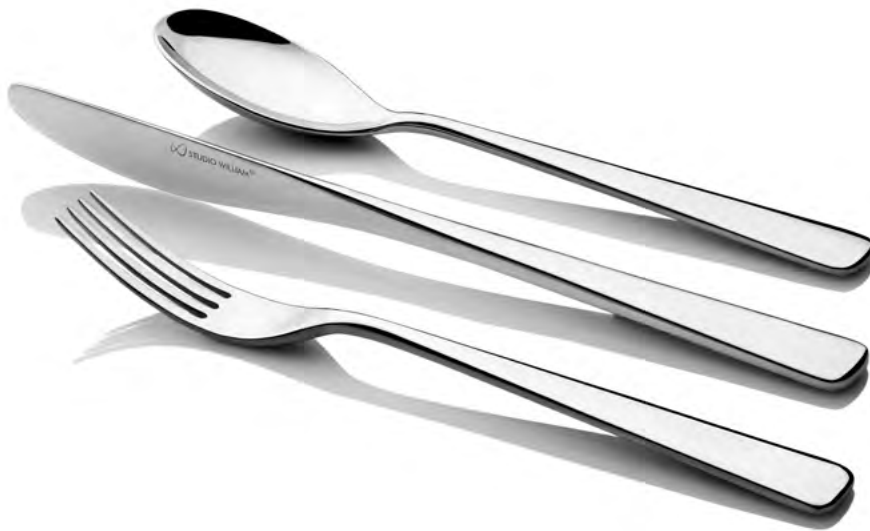
WATCH MULBERRY VIDEO





KARRI MIRROR - 5MM

The Karri tree is a type of eucalyptus tree found in Western Australia and is considered sacred by the Aborigines. Karri's minimal straight appearance is both confident and innovative. The heavy gauged steel of the forks and spoons give beautiful weight and balance. The standing-up knife blade is sleek, with no traditional bolster from handle into blade. A gorgeous seamless transition from handle in blade. It is very comfortable to hold in the hand and use.





APPETIZER FORK 150MM - KAM880026



APPETIZER/TAPAS/BUTTER KNIFE 172MM - KAM880019



APPETIZER SPOON 150MM - KAM880027



BOUILLON SOUP SPOON SMALL 188MM - KAM880034



LONG MOCHA SPOON 220MM KAM880036



MINI TASTER SPOON 150MM - KAM880038



SEAFOOD/TASTER FORK 150MM - KAM880045



SERVING SPOON 248MM - KAM880009



SERVING FORK - 248MM KAM880011



COFFEE SPOON 116MM - KAM880013



ESPRESSO SPOON 106MM - KAM880014



STEAK KNIFE 245MM - KAM880015





SMALL PASTRY FORK 160MM - KAM880055



FISH FORK 188MM - KAM880023



FISH KNIFE 225MM - KAM880022



TASTER SPORK 135MM - KAM880046



SMALL BOWL DESSERT SPOON 188MM - KAM880018



MENU TASTER SPOON 188MM - KAM880018



CHEESE KNIFE 225MM - KAM880020



WATCH KARRI VIDEO





KUMQUAT MIRROR - 5MM

Kumquats are native to the Asia-Pacific region and the Cantonese use this fruit in medicine and it can also be used as a popular alternative to an Olive in a Martini. Elegant and poised, Kumquat knives have been specially created to blend into our Karri pattern, for those who wish to have an alternative to this pattern's stand-up knife. The form has simplicity and sophistication. The clean straight lines are balanced with soft, oval sections of the handle.



THE CHICAGO
ATHENAEUM
MUSEUM OF
ARCHITECTURE
AND DESIGN



SIDE FORK 188MM - KAM880004



TABLE FORK 210MM - KAM880002



TABLE KNIFE 240MM - KQM880001



SIDE KNIFE 212MM - KQM880005



SOUP SPOON 210MM - KAM880003



DESSERT SPOON 188MM - KAM880006



ENGLISH TEA SPOON 132MM - KAM880007



APPETIZER FORK 150MM - KAM880026



APPETIZER/TAPAS/BUTTER KNIFE 172MM - KAM880019



APPETIZER SPOON 150MM - KAM880027



BOUILLON SOUP SPOON SMALL 188MM - KAM880034



LONG MOCHA SPOON 220MM - KAM880036



MINI TASTER SPOON 150MM - KAM880038



SEAFOOD/TASTER FORK 150MM - KAM880045



SERVING SPOON 248MM - KAM880009



SERVING FORK 248MM - KAM880011



STEAK KNIFE 245MM - KAM880015



SMALL BOWL DESSERT SPOON 188MM - KAM880018



COFFEE SPOON 116MM - KAM880013



ESPRESSO SPOON 106MM - KAM880014





FISH FORK 188MM - KAM880023



TASTER SPORK 135MM - KAM880046



FISH KNIFE 225MM - KAM880022



SMALL PASTRY FORK 160MM - KAM880055



MENU TASTER SPOON 188MM - KAM880018



WATCH KUMQUAT VIDEO





ROYAL OAK MIRROR - 4.5MM

Hidden beneath the handles is a reference to the historical “King’s Pattern”. This can be placed on display on the table, or concealed like the King himself.

The Royal Oak is the name given to the oak tree in which Charles II of England hid to escape the Roundheads during The Battle of Worcester in 1651. An ancient oak, thought to be from an acorn from the original, still stands at Boscobel in Shropshire.





SERVING SPOON 248MM - RYM880009



SERVING FORK 248MM - RYM880011



COFFEE SPOON 116MM - RYM880013



ESPRESSO SPOON 106MM - RYM880014



STEAK KNIFE 245MM - RYM880015



APPETIZER FORK 150MM - RYM880026



BUTTER KNIFE 172MM - RYM880019



APPETIZER SPOON 150MM - RYM880027



SMALL BOWL DESSERT SPOON 188MM - RYM880018



FISH FORK 188MM - RYM880023



FISH KNIFE 225MM - RYM880022



PIE SERVER 248MM - RYM880016



SAUCE LADLE 174MM - RYM880017



BOUILLON SPOON 188MM - RYM880034



PASTRY FORK 160MM - RYM880055



WATCH ROYAL OAK VIDEO





ROYAL OAK GOLDPLATE - 4.5MM

Royal Oak Gold is the epitome of elegance. Hidden beneath the handles is a reference to the historical “King’s Pattern”. This detail is plated with 24 carat gold. The cutlery can be placed on the table as normal, or have a few pieces (or all) turned over in the ‘continental style’ to show a subtle opulence.



SIDE FORK 188MM - RYGP8700004



TABLE FORK 210MM - RYGP8700002



TABLE KNIFE 240MM - RYGP8700001



SIDE KNIFE 212MM - RYGP8700005



SOUP SPOON 210MM - RYGP8700003



DESSERT SPOON 188MM - RYGP8700006



ENGLISH TEA SPOON 132MM - RYGP8700007



SERVING SPOON 248MM - RYGP870009



SERVING FORK 248MM - RYGP870011



COFFEE SPOON 116MM - RYGP870013



ESPRESSO SPOON 106MM - RYGP870014



BUTTER KNIFE 172MM - RYGP870019



BOUILLON SPOON 188MM - RYGP870034



SMALL BOWL DESSERT SPOON 188MM - RYGP870018



FISH FORK 188MM - RYGP870023



FISH KNIFE 225MM - RYGP870022



PASTRY FORK 160MM - RYGP870055



SUGAR TONGS 132MM - RYGP/M870070





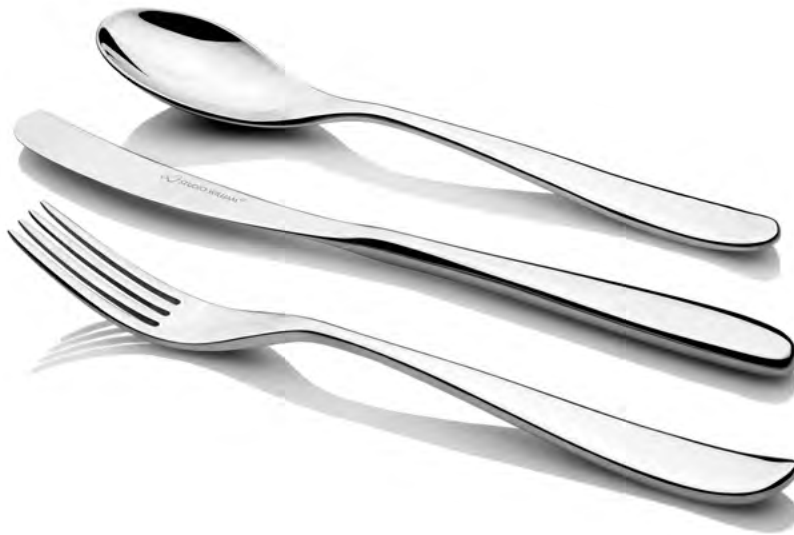
OLIVE MIRROR - 4.5MM

Using beautiful refined asymmetric lines Olive challenges the appearance of traditional cutlery and brings personality to the dining table. The design was inspired by the gnarly nature of the tress forming around their environment.

Olive won the prestigious Reddot Award and has been placed in the permanent collection at the Design Museum in Essen, Germany.



reddot design award



SIDE FORK 188MM - OLM880004



TABLE FORK 210MM - OLM880002



TABLE KNIFE 240MM - OLM880001



SIDE KNIFE 212MM - OLM880005



SOUP SPOON 210MM - OLM880003



DESSERT SPOON 188MM - OLM880006



ENGLISH TEA SPOON 132MM - OLM880007



WATCH OLIVE MIRROR VIDEO



FISH FORK 188MM - OLM880023



FISH KNIFE 225MM - OLM880022



TAPAS / APPETIZER FORK 150MM - OLM880026



BUTTER KNIFE 172MM - OLM880019



TAPAS / APPETIZER SPOON 150MM - OLM880027



TASTER SPORK 188MM - OLM880046



MINI TASTER SPOON 150MM - OLM880038



SEAFOOD FORK 175MM - OLM880045



BOUILLON SPOON 188MM - OLM880034



PASTRY FORK 160MM - OLM880055



SERVING SPOON 248MM - OLM880009



SERVING FORK 248MM - OLM880011



COFFEE SPOON 116MM - OLM880013



ESPRESSO SPOON 106MM - OLM880014



SMALL BOWL DESSERT SPOON 188MM - OLM880018



STEAK KNIFE 245MM - OLM880015



CHEESE KNIFE 223MM - OLM880020



OLIVE SATIN - 4.5MM

Using beautiful refined asymmetric lines Olive challenges the appearance of traditional cutlery and brings personality to the dining table. The design was inspired by the gnarly nature of the tress forming around their environment.

Olive won the prestigious Reddot Award and has been placed in the permanent collection at the Design Museum in Essen, Germany.



reddot design award



SIDE FORK 188MM - OLS880004



TABLE FORK 210MM - OLS880002



TABLE KNIFE 240MM - OLS880001



SIDE KNIFE 212MM - OLS880005



SOUP SPOON 210MM - OLS880003



DESSERT SPOON 188MM - OLS880006



ENGLISH TEA SPOON 132MM - OLS880007



SERVING SPOON 248MM - OLS880009



SERVING FORK 248MM - OLS880011



STEAK KNIFE 245MM - OLS880015



BUTTER KNIFE 172MM - OLS880019



SMALL BOWL DESSERT SPOON 188MM - OLS880018



BOUILLON SPOON 188MM - OLS880034



FISH FORK 188MM - OLS880023



FISH KNIFE 225MM - OLS880022



COFFEE SPOON 116MM - OLS880013



ESPRESSO SPOON 106MM - OLS880014



APPETIZER SPOON 106MM - OLS880027



APPETIZER SPOON 106MM - OLS880026

WATCH OLIVE SATIN VIDEO





MAHOGANY SATIN - 4.5MM

The fruit of the mahogany tree is the inspiration for mahogany cutlery. The shape of the fruit was imagined to be pressed into metal to create a spoon bowl. The strong mahogany trunks, inspired the slender to thick tapered handles. Mahogany Cutlery has been designed to highlight the functional area of a utilitarian object by making a feature of the manufacturing processes that go into creating cutlery. The edges of the handles are finished with crafted radii to ensure a delicate ergonomic feeling to the hand, whilst the varying thickness gauges in the handles have been engineered for refined weight and balance.



product design award



reddot design award



THE CHICAGO ATHENAEUM MUSEUM OF ARCHITECTURE AND DESIGN





SERVING SPOON 248MM - MHS880009



SERVING FORK - 248MM MHS880011



COFFEE SPOON 116MM - MHS880013



ESPRESSO SPOON 106MM - MHS880014



STEAK KNIFE 245MM - MHS880015



BUTTER KNIFE 172MM - MHS880019



SMALL BOWL DESSERT SPOON 188MM - MHS880018



FISH FORK 188MM - MHS880023



FISH KNIFE 225MM - MHS880022



BOUILLON SPOON 188MM - MHS880034



PASTRY FORK 160MM - MHS880055

WATCH MAHOGANY VIDEO





TILIA MIRROR - 4MM

The simplicity of Tilia's clean flowing form makes this a very elegant and sophisticated pattern.

Long and elegant, our Tilia range is unique, like the family of trees itself. The exact number of species of Tilia is subject to considerable debate, as many, or most, of the species will hybridise readily, both in the wild and in cultivation.



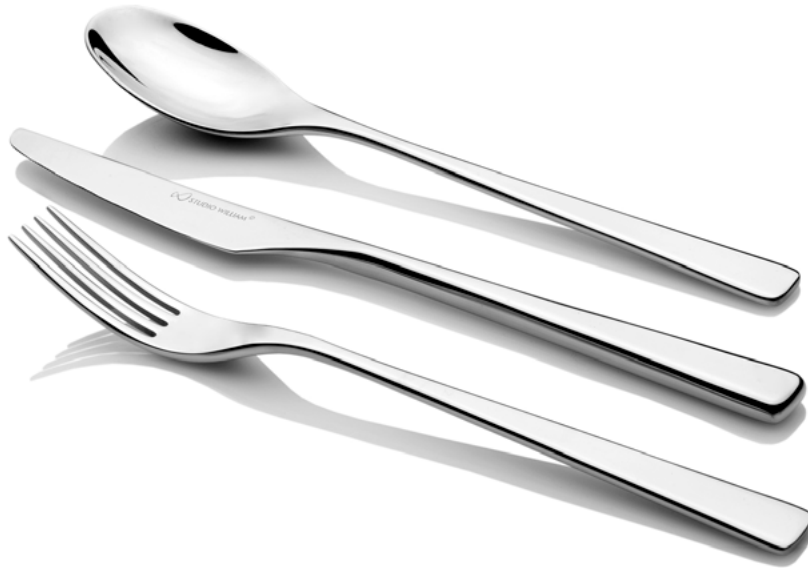
THE CHICAGO
ATHENAEUM
MUSEUM OF
ARCHITECTURE
AND DESIGN



GERMAN
DESIGN
AWARD
WINNER



product
design award



SIDE FORK 192MM - TLM880004



TABLE FORK 215MM - TLM880002



TABLE KNIFE 240MM - TLM880001



SIDE KNIFE 214MM - TLM880005



SOUP SPOON 215MM - TLM880003



DESSERT SPOON 192MM - TLM880006



ENGLISH TEA SPOON 135MM - TLM880007



SERVING SPOON 248MM - TLM880009



SERVING FORK 248MM - TLM880011



COFFEE SPOON 116MM - TLM880013



ESPRESSO SPOON 106MM - TLM880014



STEAK KNIFE 245MM - TLM880015



BUTTER KNIFE 172MM - TLM880019



PASTRY FORK 160MM - TLM880055



SMALL BOWL DESSERT SPOON 188MM - TLM880018



FISH FORK 192MM - TLM880023



FISH KNIFE 225MM - TLM880022



BOUILLON SPOON 188MM - TLM880034

WATCH TILIA MIRROR VIDEO





TILIA SATIN - 4MM

The simplicity of Tilia's clean flowing form makes this a very elegant and sophisticated pattern.

Long and elegant, our Tilia range is unique, like the family of trees itself. The exact number of species of Tilia is subject to considerable debate, as many, or most, of the species will hybridise readily, both in the wild and in cultivation.



THE CHICAGO
ATHENAEUM
MUSEUM OF
ARCHITECTURE
AND DESIGN



GERMAN
DESIGN
AWARD
WINNER



product
design award



SIDE FORK 192MM - TLS880004



TABLE FORK 215MM - TLS880002



TABLE KNIFE 240MM - TLS880001



SIDE KNIFE 214MM - TLS880005



SOUP SPOON 215MM - TLS880003



DESSERT SPOON 192MM - TLS880006



ENGLISH TEA SPOON 135MM - TLS880007



SERVING SPOON 248MM - TLS880009



SERVING FORK 248MM - LS880011



COFFEE SPOON 116MM - TLS880013



ESPRESSO SPOON 106MM - TLS880014



STEAK KNIFE 245MM - TLS880015



BUTTER KNIFE 172MM - TLS880019



BOUILLON SPOON 188MM - TLS880034



SMALL BOWL DESSERT SPOON 188MM - TLS880018



FISH FORK 192MM - TLS880023



FISH KNIFE 225MM - TLS880022

WATCH TILIA SATIN VIDEO





TILIA CRACKLE - 4MM

The newest addition to this range adds a textured and tactile element to the otherwise minimal design. Tilia Crackle features a crackle inspired texture debossed into the front and back of each handle, blending seamlessly into each utensil head. Tilia Crackle decoration is inspired by the crackled glazing applied on to dinnerware, where, during the kiln firing process, the glaze cracks and makes a beautiful irregular optical effect. Available in mirror polished finish only.



SIDE FORK 192MM - TLCKM 8800004



TABLE FORK 215MM - TLCKM 8800002



TABLE KNIFE 240MM - TLCKM 8800001



SIDE KNIFE 214MM - TLCKM 8800005



SOUP SPOON 215MM - TLCKM 8800003



DESSERT SPOON 192MM - TLCKM 8800006



ENGLISH TEA SPOON 135MM - TLCKM 8800007



BOUILLON SPOON 188MM - TLCKM 880034



BUTTER KNIFE 172MM - TLCKM 880019



COFFEE SPOON 116MM - TLCKM 880013



ESPRESSO SPOON 106MM - TLCKM 880014



STEAK KNIFE 240MM - TLCKM 880015



PASTRY FORK 160MM - TLCKM 880055



SMALL BOWL DESSERT SPOON 188MM - TLCKM 880018



WATCH TILIA CRACKLE VIDEO





BALSA MIRROR - 4MM

Balsa features unique and dynamic details, that compliment and enhance your dining experience. Balsa is a very popular material to use when model making and the very first models of Balsa were made using this versatile wood. Deliberately elongated and slender looking fork heads and spoon bowls enable the diner to pick up smaller food portion sizes, this allows the diner to really think about the tastes and textures the chef has created.



THE CHICAGO
ATHENAEUM
MUSEUM OF
ARCHITECTURE
AND DESIGN



GERMAN
DESIGN
AWARD
WINNER



reddot design award



SIDE FORK 188MM - BLM880004



TABLE FORK 210MM - BLM880002



TABLE KNIFE 240MM - BLM880001



SIDE KNIFE 212MM - BLM880005



SOUP SPOON 210MM - BLM880003



DESSERT SPOON 188MM - BLM880006



ENGLISH TEA SPOON 132MM - BLM880007



COFFEE SPOON 116MM - BLM880013



ESPRESSO SPOON 106MM - BLM880014



STEAK KNIFE 245MM - BLM880015



SMALL BOWL DESSERT SPOON 188MM - BLM880018



BOUILLON SOUP SPOON 188MM - BLM880034



BUTTER KNIFE 172MM - BLM880019



SERVING SPOON 248MM - BLM880009



SERVING FORK - 248MM BLM880012

WATCH Balsa VIDEO





LARCH MIRROR - 3.5MM

Design concept: historical modern. Looking back to the middle 1700's when deer antlers were used as handles for cutlery. William designed Larch to be a modern curvaceous interpretation of this era. The curved 1700's knife blade and three pronged fork heads, re-designed to perform to modern expectations of today's performance needs. A great range for historical/grand properties, character interior designed restaurants. Also recommended for banqueting.





SMALL BOWL DESSERT SPOON 188MM - LAM880018



FISH FORK 188MM - LAM880023



FISH KNIFE 225MM - LAM880022



CHEESE KNIFE 212MM - LAM880020



BOUILLON SPOON 188MM - LAM880034



LONG MOCHA SPOON 225MM - LAM880036



PASTRY FORK 160MM - LAM880055



HORN HANDLED STEAK KNIFE 240MM - LASMB880035



SERVING SPOON 248MM - LAM880009



SERVING FORK 248MM - LAM880011



COFFEE SPOON 116MM - LAM880013



ESPRESSO SPOON 106MM - LAM880014



STEAK KNIFE 245MM - LAM880015



BUTTER KNIFE 172MM - LAM880019



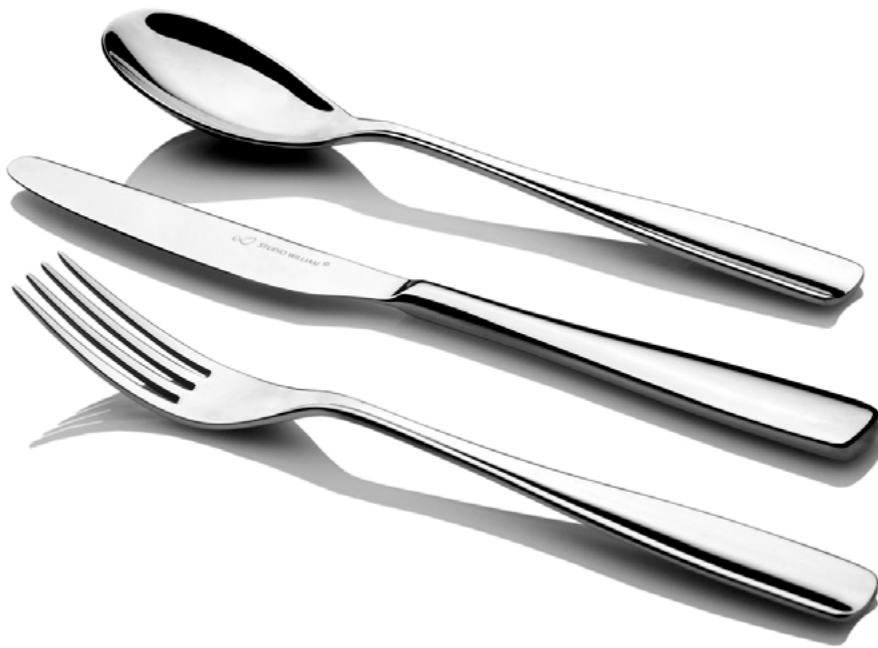
WATCH LARCH VIDEO





REDWOOD MIRROR - 3.5MM

Inspired by classic cutlery styling. The Redwood design concept carries the spirit of the violin “fiddle” shaped handle into a new clean uncluttered look, with curved-shaped handles on forks and spoons. This pattern’s aesthetics suits both contemporary and traditional settings, in particular ADD and banqueting.



SIDE FORK 188MM - REM880004



TABLE FORK 210MM - REM880002



TABLE KNIFE 235MM - REM880001



SIDE KNIFE 212MM - REM880005



SOUP SPOON 210MM - REM880003



DESSERT SPOON 188MM - REM880006



ENGLISH TEA SPOON 132MM - REM880007



SERVING SPOON 248MM - REM880009



SERVING FORK 248MM - REM880011



COFFEE SPOON 116MM - REM880013



ESPRESSO SPOON 106MM - REM880014



STEAK KNIFE 245MM - REM880015



BUTTER KNIFE 172MM - REM880019



FISH FORK 188MM - REM880023



FISH KNIFE 225MM - REM880022



BOUILLON SPOON 188MM - REM880034

WATCH REDWOOD VIDEO





LARCH SILVERPLATE - 3.5MM

Larch cutlery has historical influences but it's flowing form gives this pattern a modern flavour.

Made using a slightly heavier gauge of the finest quality 18/10 Stainless Steel for the forks and spoons than our normal Larch cutlery (available in mirror finish), the cutlery is finished in a beautiful 25 micron electro plated Nickel Silverplate for the best possible longevity. Please note that any Silverplate should be hand washed only.





SERVING SPOON 248MM - LASP880009



SERVING FORK 248MM - LASP880011



COFFEE SPOON 116MM - LASP880013



ESPRESSO SPOON 106MM - LASP880014



STEAK KNIFE 245MM - LASP880015



BUTTER KNIFE 172MM - LASP880019



SMALL BOWL DESSERT SPOON 188MM - LASP880018



FISH FORK 188MM - LASP880023



FISH KNIFE 225MM - LASP880022



CHEESE KNIFE 212MM - LASP880020



BOUILLON SPOON 188MM - LASP880034



LONG MOCHA SPOON 225MM - LASP880036



PASTRY FORK 160MM - LASP880055





MULBERRY SILVERPLATE - 5MM

The Mulberry tree is generally a short-lived tree with a lifespan similar to that of humans, however there are some known to be over 250 years old.

Made using a slightly heavier gauge of the finest quality 18/10 Stainless Steel for the forks and spoons than our normal Mulberry cutlery (available in mirror finish), the cutlery is finished in a beautiful 25 micron electro plated Nickel Silverplate for the best possible longevity. Please note that any Silverplate should be hand washed only.



SIDE FORK 188MM - MUSP8800004



TABLE FORK 210MM - MUSP8800002



TABLE KNIFE 240MM - MUSP8800001



SIDE KNIFE 212MM - MUSP8800005



SOUP SPOON 210MM - MUSP8800003



DESSERT SPOON 188MM - MUSP8800006



ENGLISH TEA SPOON 132MM - MUSP8800007



SERVING SPOON 248MM - MUSP8800009



SERVING FORK 248MM - MUSP8800011



COFFEE SPOON 116MM - MUSP8800013



ESPRESSO SPOON 106MM - MUSP8800014



STEAK KNIFE 245MM - MUSP8800015



PIE SERVER 248MM - MUSP8800016



FRENCH SAUCE SPOON 188MM - MUSP8800029



CHOP STICKS 240MM - MUSP8800031



SMALL BOUILLON SPOON 188MM - MUSP8800034



LONG MOCHA SPOON 220MM - MUSP8800036



BUFFET SPORK 185MM - MUSP8800048



LOBSTER PICK 200MM - MUSP8800050



PASTRY FORK 160MM - MUSP8800055





BUTTER KNIFE 172MM - MUSP880019



CHEESE KNIFE 216MM - MUSP880020



FISH FORK 188MM - MUSP880023



FISH KNIFE 225MM - MUSP880022



SAUCE LADLE 174MM - MUSP880017



LARGE SOUP LADLE 300MM - MUSP880030



ICE CREAM SPOON 160MM - MUSP880064



SMALL BOWL DESSERT SPOON 188MM - MUM880018



TEXTURED SPOON DROPLET 188MM - MUSP880059



TEXTURED SPOON RAIN DROPS 188MM - MUSP880060



TEXTURED SPOON SWIRL 188MM - MUSP880061



TEXTURED SPOON RIPPLE 188MM - MUSP880062





CHOPSTICKS

Toona Chinese Chopsticks available in a selection of colours: Black, Ivory & Red. Each having a textured area at the tip of the chopstick for added food grip, made in premium SPS Melamine. 18/10 brushed Satin Stainless Steel cap with red insert detail for finishing touch.

Mulberry Korean Style 18/10 Stainless Steel mirror finish chopsticks, with pressed textured area at the tip of the chopstick for added food grip.



MULBERRY MIRROR KOREAN CHOPSTICKS 250MM - MUM880031



TOONA CHOPSTICKS BLACK WITH BLACK 270MM - TON880090



TOONA CHOPSTICKS BLACK WITH GOLD 270MM - TON880087



TOONA CHOPSTICKS BLACK 270MM - TON880084



TOONA CHOPSTICKS IVORY 270MM - TON880085



TOONA CHOPSTICKS CRIMSON 270MM - TON880086



TOONA CHOPSTICKS CRIMSON WITH GOLD 270MM - TON880091





TOONA CHOPSTICKS JADE WITH GOLD 270MM - TON880088



TOONA CHOPSTICKS MIDNIGHT WITH GOLD 270MM - TON880092



TOONA CHOPSTICKS WHITE WITH GOLD 270MM - TON880093



JAPANESE CHOPSTICKS

Historically, there are three types of chopsticks: Korean, Japanese and Chinese. Japanese chopsticks frequently are square in the handle, and the tips are more pointy and thinner in size.

They are beautifully balanced, light, so as to be very agile in the hand. The characteristics of the simple classic style with tiny logo detail at the end, allow for a character and premium design detail.



JAPANESE CHOPSTICK BLACK 250MM - JPN 880091

SILVERPLATE SERVICE

We can Silverplate almost any piece of cutlery we produce. The cutlery is finished in a beautiful 25 micron electro plated Nickel Silverplate for the best possible longevity. We silverplate to order, which means there is a 4 - 8 week lead time.

The ranges that we recommend for Silverplating:

Larch
Olive
Royal Oak Mirror
Mulberry

We offer a second to none after care service, for making sure your silverplate stands the test of time.



WHY WORK WITH US?

CUSTOMER SERVICE

We love what we do, we love cutlery and aspire to thoughtful Customer Service.

PIECE BY PIECE INSPECTION

For every production our Quality Control team meticulously inspect each piece of cutlery, pieces-by-piece, for imperfections. This helps maintain our global reputation for manufacturing some of the most beautiful cutlery in the World.

5 YEAR WARRANTY

We offer a 5 year Foodservice Manufacturer's Warranty on all of our Stainless Steel products.

SHORT LEAD-TIMES

We carry a vast amount of stock in our global warehouses, under normal circumstances we will organise dispatch within one week.

12 PIECE MINIMUM ORDER

You only need to order 12 pieces, when ordering replenishments, for your minimum order quantity.

CONTACT US

Phone: +44 1386 800 000

Email: sales@studiowilliam.com



STUDIO WILLIAM PACKAGING

FOODSERVICE

The commitment to fully sustainable packaging using natural materials goes across our whole business. In 2022 we made the change to plain card inner cartons, biodegradable poly bags and paper tape for all new factory orders.

RETAIL

Award winning, 100% compostable packaging, using natural materials, water-based printing inks and water-based glues. The different sizes allow you to create bespoke set sizes to suit your customer base.

The concept created by William, is a braille embossed brown cardboard box lid, inviting user interaction, to read the braille explanation of the box contents, or simply see the braille as minimal graphic art, both highlighting how considered design can create a rewarding human experience.

